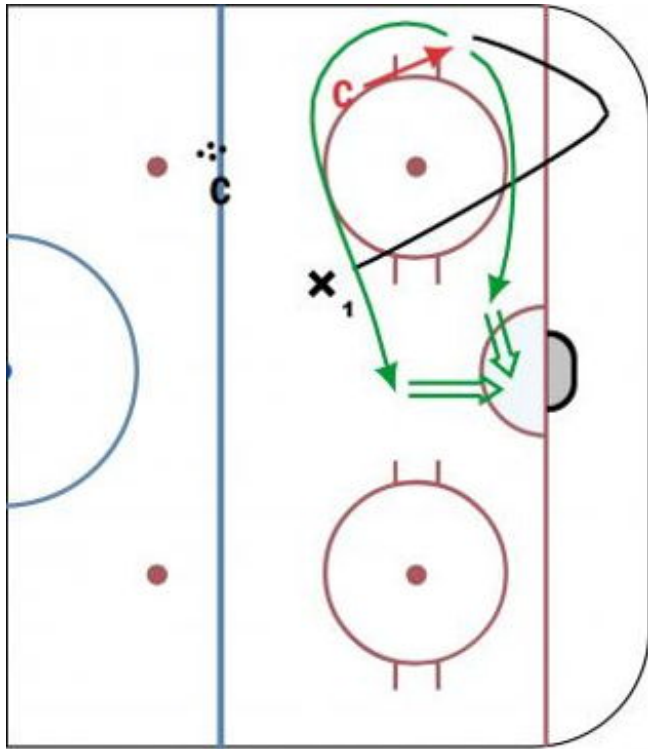


Penguins Corner Walk



Description

Puck gets dumped into the corner, player picks puck up and cuts up the wall. Co pressures puck carrier. Player must make a move and decide which direction to go to avoid the pressure. Player then drives the net and shoots.

Notes: Co decides how exactly to pressure the player - player should read the pressure and react accordingly. Force players to accelerate out of the move to the net.

Tags: Driving from the Corner, Decisions, Up the Wall Pressure, Quick Cuts, Driving the Net