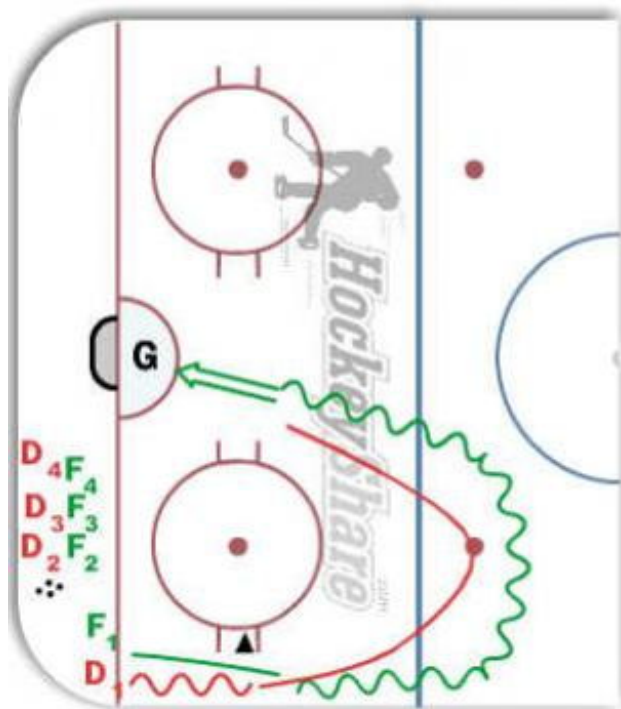


Board Angling w/Shot



Description

D1 and F1 line up together
On whistle D1 and F1 skate at speed
At cone F1 angles toward D1 angling into boards (Body Contact)
F1 takes puck and continues outside zone and cuts back in
D1 backchecks to retrieve puck or push F1 wide.
F1 takes shot

Tags: D1 Head Up, D1 Get Close to boards, F1 Cut Off Puck Carrier, F1 use body, D1 Keep Feet Moving