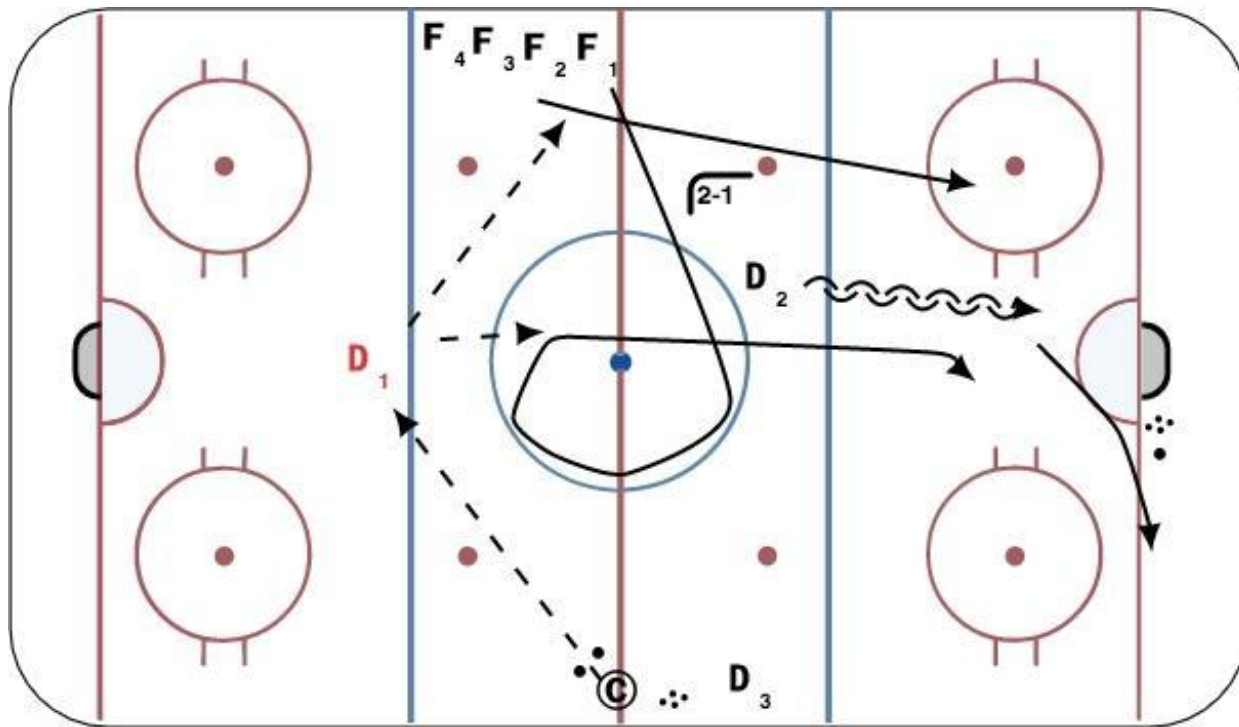


Red Army Continuous 2 on 1



[Animation #1](#)

Description

Co passes to D₁. D₁ passes to either F₁ or F₂. F₁ and F₂ go 2-1 vs D₂. D₂ grabs a new puck and breaks out F₁ and F₂. F₁ and F₂ go back up ice against D₁ 2-1. D₂ opens up at the far blue line (in D₁'s position in diagram) to continue drill.

Tags: 2 on 1, Continuous, D Following Play Up Ice