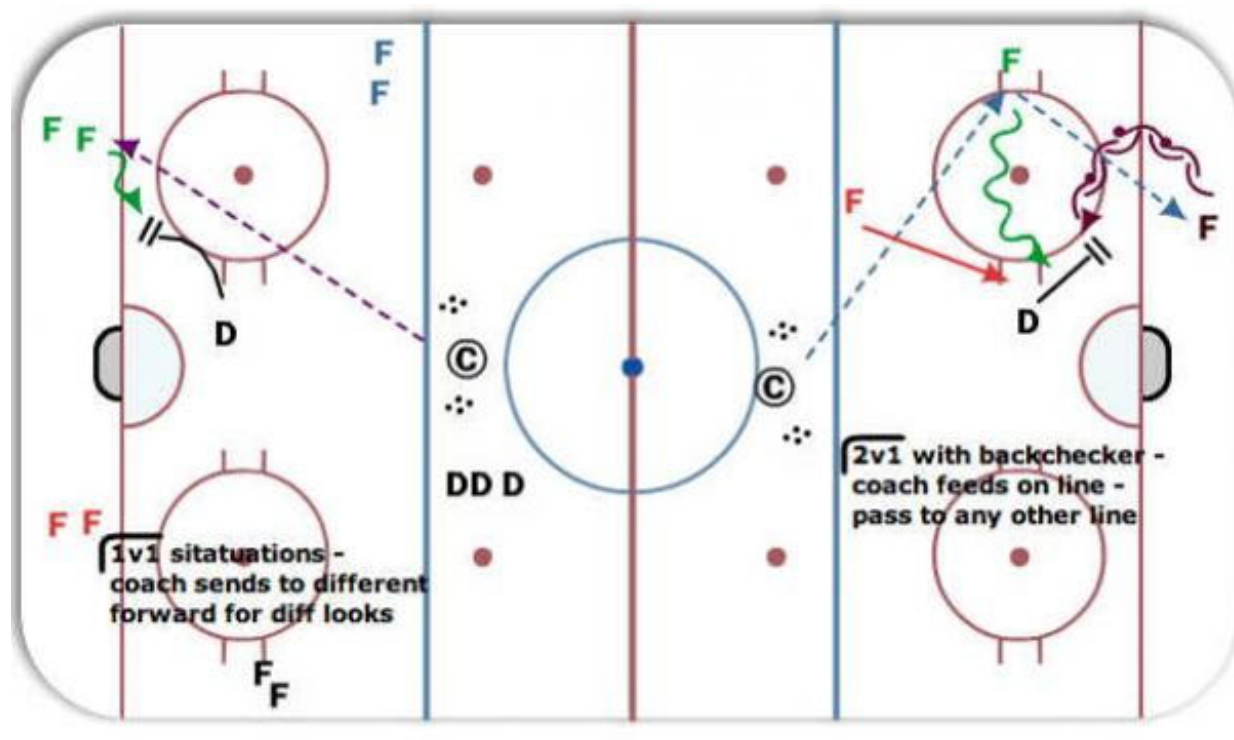


1v1 Situations / 2v1 with Back Checker



Description

1v1 Situations:

Coach feeds a Forward line of choice that create 1v1 high, med, or low with defense - give one of each to each defenseman before rotating.

2v1 with Back Checker:

Coach starts by feeding a line of Fwd. That line passes to one of the other two lines to indicate their offensive partner. Forward Line NOT passed to will engage as back-checking forward supporting defenseman.